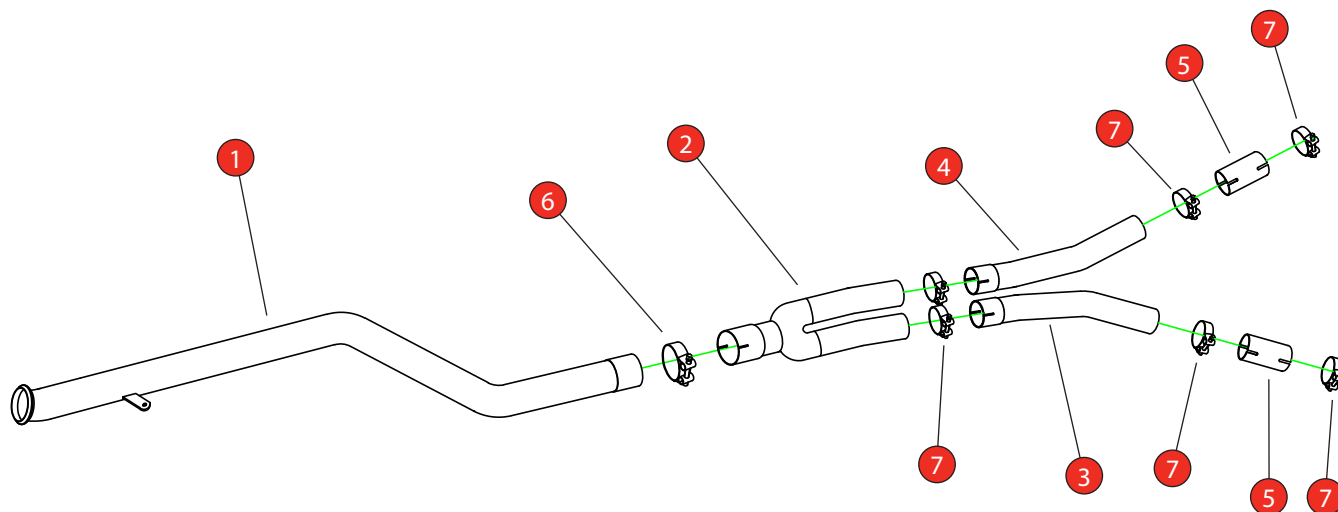


Car	BMW X3 M40i MHEV (G01)	Part No.	SBMP112
Year	2021-Current	Fit Kits	508FK
Notes	Where not supplied use original fittings. Original system requires cutting	Features	Pipe Diameter:- 80mm

Estimated Fitting Time: 1 Hours 30 Minutes



NO.	PART NO.	DESCRIPTION	QTY
1	983BM	GPF Delete Front Pipe	1
2	984BM	GPF Delete 'Y' Piece	1
3	985BM	GPF Delete L/H Link Pipe	1
4	986BM	GPF Delete R/H Link Pipe	1
Fit Kit			
5	AD79	Adaptor	2
6	Z016.10069	79-85mm Clamp	1
7	Z016.10055	68-73mm Clamp	6

CLASSIFICATION	Motorsport Use Only
HOMOLOGATED	No
DATE	22/09/2025
ISSUE	00
AUTHORISED	G O'Shea

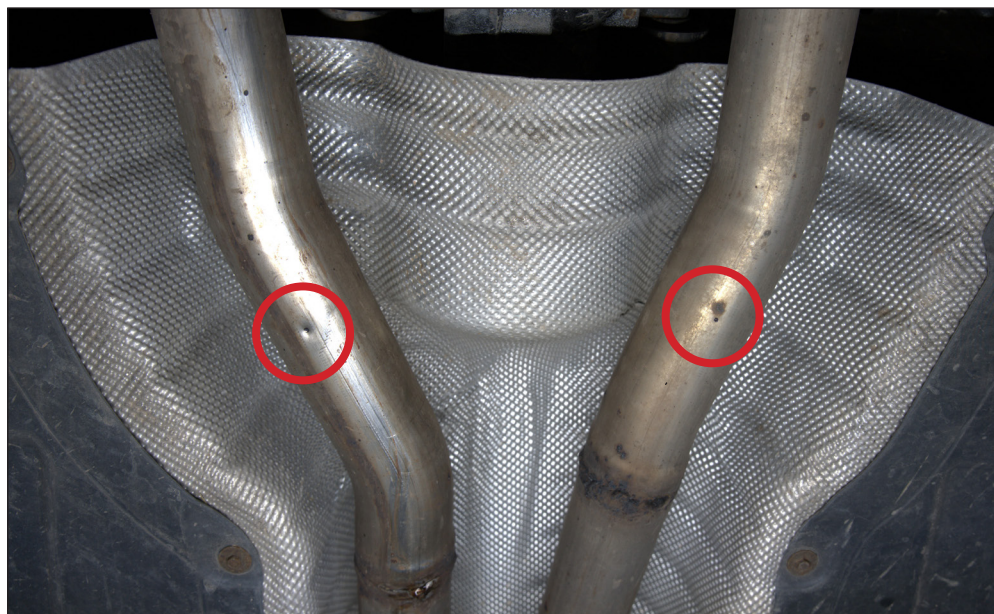
NOTE: ENSURE SCORPION SYSTEM IS CLEAR OF MOVING PARTS AND ALL ORIGINAL FUNCTIONS WORK CORRECTLY.



STAY CONNECTED TO RED POWER.

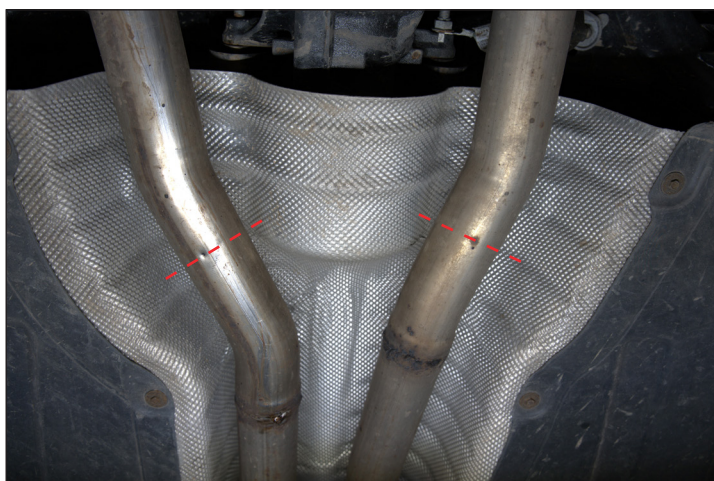
Car	BMW X3 M40i MHEV (G01)	Part No.	SBMP112
Year	2021-Current	Fit Kits	508FK
Notes	Where not supplied use original fittings. Original system requires cutting	Features	Pipe Diameter:- 80mm

Estimated Fitting Time: 1 Hours 30 Minutes



Cutting Instructions:

The original system requires cutting in two places at the rear diff. (Unless fitting at the same time as the Scorpion GPF-Back). There is a dimple on each pipe, cut at that point and clean up the edges.



STAY CONNECTED TO RED POWER.